



**IOBC
WPRS**

International Organisation for Biological and Integrated Control (IOBC)
West Palaearctic Regional Section (WPRS)
Organisation Internationale de Lutte Biologique et Intégrée (OILB)
Section Régionale Ouest Paléarctique (SROP)



IOBC-WPRS Working Group "Integrated Protection of Fruit Crops"

Joint meeting of Sub-Groups

"Pome Fruit Diseases" & "Pome Fruit Arthropods"

BENEFruits 2025

14th – 18th September 2025 in Wageningen, The Netherlands

<https://event.wur.nl/benefruits-2025>

Second announcement

On behalf of the IOBC/WPRS Working groups "Integrated Protection of Fruit Crops" Sub-Groups "Pome Fruit Diseases" and "Pome Fruit Arthropods", you are cordially invited to the forthcoming workshop on Pome Fruit Diseases & Pome Fruit Arthropods that will take place from 14th – 18th September 2025 in Wageningen, The Netherlands.

We aim to bring together the latest advances in research of pome fruit pest and diseases, to provide an opportunity for exchange of information and ideas and to stimulate common research and collaboration. The workshop program includes oral and poster sessions, plenary discussions, a meeting with growers and advisors and a one-day excursion.

English will be the official language of the meeting. Proceedings with all contributions, both oral and poster presentations will be published as full papers or extended abstracts in the IOBC/WPRS Bulletin.

We look forward to seeing you in Wageningen!

Venue



The IOBC 'Benefruits' meeting 2025 will be held Wageningen International Conference Centre (WICC; <https://www.wicc.nl/en/>) in the city center of Wageningen. Next to being a conference center with 2 large conference rooms and many smaller breakout rooms, the WICC is a hotel with over 200 comfortable hotel rooms and there is also a restaurant located within the same building. The WICC is located at 450 meter from the bus station and at a walking distance from the cozy and historical center of Wageningen.



**IOBC
WPRS**

International Organisation for Biological and Integrated Control (IOBC)
West Palaearctic Regional Section (WPRS)
Organisation Internationale de Lutte Biologique et Intégrée (OILB)
Section Régionale Ouest Paléarctique (SROP)





Nestled in the heart of the Netherlands in the province of Gelderland, lies Wageningen, a charming town known for its global influence in science and research. Often called the "City of Life Sciences," it is home to Wageningen University & Research (WUR), one of the world's leading institutions in agriculture, food security, and environmental science. But Wageningen's story isn't just about innovation—it's also a town with a significant historical legacy.

Conference venue address:
Lawickse Allee 9
6701 AN Wageningen
The Netherlands

How to get there?

The workshop will be held in Wageningen, the Netherlands. The town is easily accessible with a one-hour train trip from Schiphol Amsterdam Airport to Ede-Wageningen, followed by a short bus or taxi ride.

Public transport: The WICC is easily accessible with public transport. The nearest train station is 'Ede-Wageningen'. At the front of the station you can take a bus to Wageningen. Busses depart about 6 times per hour and the bus station is located at a 7 minute walk to the conference venue WICC. For exact routes and times please check: <https://9292.nl/en> or <https://www.ns.nl/en>.

By car: this central location in the middle of the Netherlands, at the edge of the centre of Wageningen, and very easily accessible via the A50, A15 and A12 highways.

Preliminary program

- Sunday, 14th September 2025– Arrival - Registration and Welcome Drinks.
- Monday, 15th September 2025– Platform presentations.
- Tuesday, 16th September 2025– Field trip & Work Shop Dinner.
- Wednesday, 17th September 2025 – Platform presentations.
- Thursday, 18th September 2025 – Platform presentations (morning) – Departure.

Proposed topics

Pome Fruit Diseases

Proposed topics: diagnostic tools, pathogen biology and epidemiology, monitoring and forecasting infection risks, host-plant resistance and biodiversity, control methods (biocontrol, chemical, alternative, physical, sanitation), spray quality and disease control, canker diseases, postharvest diseases, microbiome, soil borne diseases, and replant disease.

Pome Fruit Arthropods

Proposed topics: integrated pest management (IPM) with precision agriculture, biodiversity and pest management in agroecosystems, conservation biocontrol, phenological models and decision support systems, novel monitoring methods, semiochemicals (including pheromones for monitoring and mating disruption), pest control methods (biocontrol, chemical, alternative, physical), spray quality and pest control, post-harvest pest control, invasive and emerging pests.





Call for abstracts

Abstracts must be sent via the online website by 15th April 2025 (abstract template available on the BENEFruits 2025 website: <https://event.wur.nl/benefruits-2025>). Abstracts will be reviewed for acceptance by the scientific committees, and authors will be notified by 31st May 2025 whether their abstract has been accepted. Submitted abstracts will be printed in the book of abstracts handed out to participants at the meeting.

Special attention will be given to poster presentations in plenary discussions during the meeting.

Presentations

Authors may express their choice of oral or poster presentation; however, the scientific committee may invite the authors to change this choice.

Oral presentations will last 20 minutes, including the question period. Presentations must be done with current software (i.e. PowerPoint) and we invite speakers to check compatibility at the beginning of the symposium.

All posters have to be printed max. A0 size (84 cm x 119 cm) in portrait layout. We will provide material to hang your poster. Posters can be installed at the beginning of the symposium, and we encourage their display until the end of the symposium.

Scientific committees

The scientific committee for the 13th International IOBC/WPRS Workshop on Pome Fruit Diseases includes: Cheryl Lennox (Stellenbosch University, South Africa), Marcel Wenneker, Kiki Kots (Wageningen University & Research Centre, the Netherlands), Wendy van Hemelrijck, Michelle Holtappels (pcfruit vzw, Belgium), and Arne Stensvand (Norwegian Institute of Bioeconomy Research / Norwegian University of Life Sciences, Norway).

The scientific committee for the 14th International IOBC/WPRS Workshop on Pome Fruit Arthropods includes: Herman Helsen (Wageningen University & Research, the Netherlands), Tim Belien (pcfruit vzw, Belgium), Michelle Fountain (NIAB EMR, UK), Greg Krawczyk (Pennsylvania State University, USA), Lucía Adriana Escudero-Colomar (IRTA, PVS, Spain), Petros Damos (Ministry of Education Religious and Sports, University of Western Macedonia, Greece).

Publications in IOBC-WPRS Bulletin

The authors of accepted abstracts will be invited to prepare and submit online a full manuscript, or a two-page extended abstract, two months after the workshop (15th November 2025). After editing, the manuscripts or extended abstracts will be published in an IOBC-WPRS Bulletin. Delegates who are not members of IOBC-WPRS will have one year membership of IOBC from time of registration. The proceedings published in the IOBC-WPRS Bulletin will be available online only for IOBC-WPRS members. Instructions to authors for the Bulletin manuscripts are available on the IOBC-WPRS website at [template.docx](#)





Registration

Registration is made through the workshop website and is required to attend the scientific sessions and social events. If you have any questions please contact: benefruits@wur.nl

How to register

The registration will be available online (<https://event.wur.nl/benefruits-2025>). Potential participants are requested to fill in the registration form:

- before 31st May 2025 (early bird registration)
- between 1st June – 31st July 2025 (standard registration)
- between 1st August – 31st August 2025 (late registration)

Below you will find an overview of the participation fees. Fees are in EUROS incl. VAT.:

REGISTRATION TYPE	EARLY (before 31.05.2025)	REGULAR (before 31.07.2025)	LATE (before 31.08.2025)
IOBC-WPRS Member	535 Euro	595 Euro	650 Euro
IOBC-WPRS Non-Member*	635 Euro	695 Euro	750 Euro
PhD Student**	415 Euro	475 Euro	515 Euro

*: The fee includes IOBC-membership for one year.

** : The fee is valid for IOBC members and non-members. A certificate confirming PhD status must be send by mail (benefruits@wur.nl) during registration.

Full registration fee includes:

- Welcome reception
- Official conference program
- Workshop proceedings
- All lunches and mid-session coffee/refreshments breaks
- Workshop Field trip
- Workshop dinner

Accompanying person:

- Workshop dinner and excursion 100 €.
- Welcome reception 30 €.

Important dates

Deadline for submission of abstracts**: 15 April 2025

Deadline for registration "early bird": 31 May 2025

Deadline for submission of full papers or extended abstracts: 15 November 2025

** Submissions will only be accepted online through the meeting website. To present a paper and have it included in the conference proceedings, at least one author must register for the workshop.





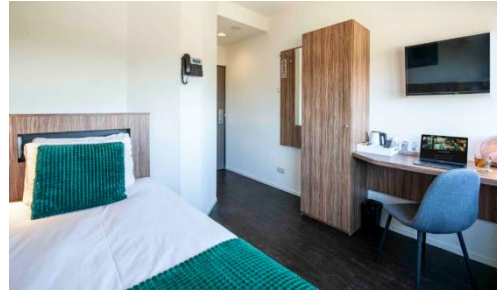
**IOBC
WPRS**

*International Organisation for Biological and Integrated Control (IOBC)
West Palaearctic Regional Section (WPRS)
Organisation Internationale de Lutte Biologique et Intégrée (OILB)
Section Régionale Ouest Paléarctique (SROP)*



Accommodation

The recommended hotel for accommodation during the Workshop is the WICC**.



See below for booking hotel rooms.

In case of any question, do not hesitate to ask,

Email BENEFruit2025: benefruits@wur.nl

Kind regards,

Tim Belien, convenor IOBC/WPRS Sub-Group Pome Fruit Arthropods (pcfruit vzw, Belgium) and Herman Helsen (Wageningen-UR, The Netherlands).

Marcel Wenneker (Wageningen-UR, The Netherlands), convenor IOBC/WPRS Sub-Group "Pome Fruit Diseases".



**IOBC
WPRS**

*International Organisation for Biological and Integrated Control (IOBC)
West Palaearctic Regional Section (WPRS)
Organisation Internationale de Lutte Biologique et Intégrée (OILB)
Section Régionale Ouest Paléarctique (SROP)*





****Accommodation WICC**

Participants can book for this event at WICC with the following block code:

- 555071 voor de Single Room
- 222803 voor de Sand Flora Single Deluxe
- 359398 voor Olive Leaf Compact Doble **single use**
- 935701 voor Twin room **single use**
- 600267 voor Plant Leaf Twin **single use**
- 575094 voor Moss Leaf Twin Deluxe **single use**
- 624001 voor Copper Botanic Loft **single use**

It goes like this:

go to the website via the link below:

www.wicc.nl/en/online-booking

And then dates and enter the code of the room below:

Promotie code

Company code

Block code

Selecteer hotelkamer(s)

The above block codes are activated on the Single Room incl. breakfast and the Twin Room single use incl. breakfast valid for the period of arrival September 14 , 2025 and departure September 18, 2025, based on first come, first served.

To book a room for a different period or a different room type, you may email sales@wicc.nl.

The block code is active until July 1, 2025, after which the block will expire and they can only reserve based on availability.